

Malvaviscus drummondii

(Turk's cap, Sleeping hibiscus)

Sleeping hibiscus got its name from the blossom that never opens completely. It is an evergreen in frost-free regions, deciduous in cool climates fast-growing shrub. In warm climates, Turk’s cap blooms year around, with a more intense showing in late summer and early autumn. Prune the stems by half in early spring to encourage more flowering. Sleeping hibiscus need full sun or partial shade, well drained to dry soil. Can resist periodic drought. The plant attracts hummingbirds as a perennial source of nectar. Used as a foundational plant, hedge or border.



Plant Image

Landscape Information

<b>French Name:</b> Hibiscus piment ou Hibiscus dormant,
<b>Pronounciation:</b> mal-vuh-VIS-kus drum-AWN-dee-eye
<b>Plant Type:</b> Shrub
<b>Origin:</b> Mexico
<b>Heat Zones:</b> 6, 7, 8, 9, 10, 11, 12, 13, 14, 15, 16
<b>Hardiness Zones:</b> 7, 8, 9, 10, 11, 12, 13
<b>Uses:</b> Hedge, Specimen, Mass Planting, Windbreak, Wildlife
<b>Size/Shape</b>
<b>Growth Rate:</b> Fast
<b>Tree Shape:</b> Upright
<b>Canopy Symmetry:</b> Irregular
<b>Canopy Density:</b> Medium
<b>Canopy Texture:</b> Medium
<b>Height at Maturity:</b> 1.5 to 3 m
<b>Spread at Maturity:</b> 1 to 1.5 meters
<b>Time to Ultimate Height:</b> 5 to 10 Years

## Malvaviscus drummondii

(Turk's cap, Sleeping hibiscus)



Flower Image

---

### Botanical Description

#### Foliage

**Leaf Arrangement:** Alternate

**Leaf Venation:** Pinnate

**Leaf Persistence:** Evergreen

**Leaf Type:** Simple

**Leaf Blade:** 5 - 10 cm

**Leaf Shape:** Ovate

**Leaf Margins:** Serrate

**Leaf Textures:** Leathery, Glossy

**Leaf Scent:** No Fragrance

**Color(growing season):** Green

**Color(changing season):** Green

---

#### Flower

**Flower Showiness:** True

**Flower Size Range:** 3 - 7

**Flower Type:** Solitary

**Flower Sexuality:** Monoecious (Bisexual)

**Flower Scent:** No Fragrance

**Flower Color:** Red

**Seasons:** Summer, Fall, Winter

---

#### Trunk

**Trunk Susceptibility to Breakage:** Generally resists breakage

**Number of Trunks:** Multi-Trunked

**Trunk Esthetic Values:** Not Showy

---

#### Fruit

**Fruit Type:** Drupe

**Fruit Showiness:** False

**Fruit Size Range:** 1.5 - 3

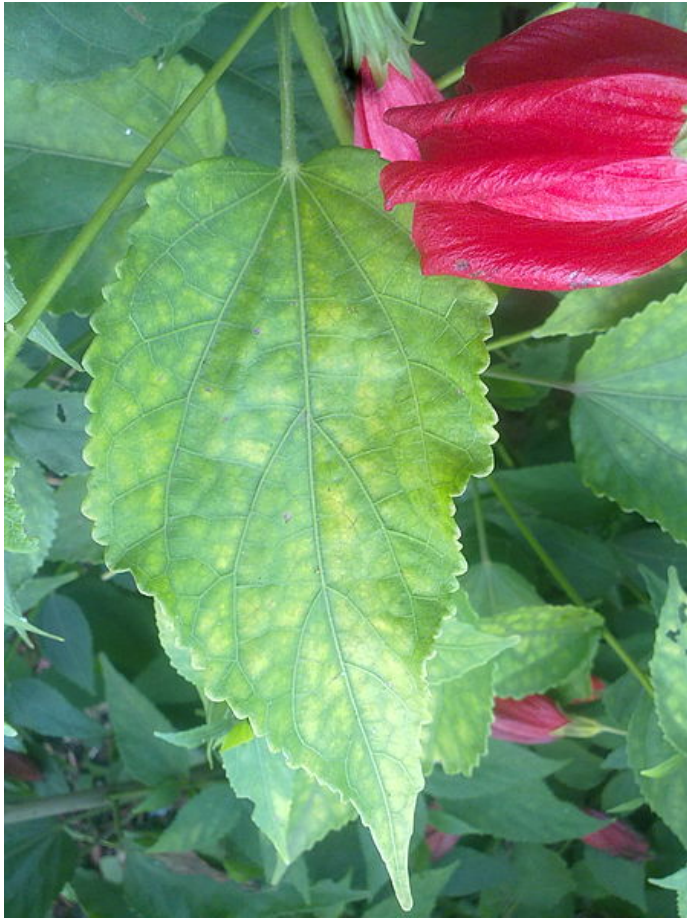
**Fruit Colors:** Red

**Seasons:** Summer, Fall, Winter

---

## Malvaviscus drummondii

(Turk's cap, Sleeping hibiscus)



Leaf Image

---

### Horticulture Management

#### Tolerance

**Frost Tolerant:** Yes

**Heat Tolerant:** Yes

**Drought Tolerant:** Yes

**Salt Tolerance:** Good

---

#### Requirements

**Soil Requirements:** Clay, Loam, Sand

**Soil Ph Requirements:** Acidic, Neutral, Alkaline

**Water Requirements:** Moderate, Low

**Light Requirements:** Part, Shade

---

#### Management

**Toxity:** No

**Invasive Potential:** No

**Pruning Requirement:** Little needed, to develop a strong structure

**Fruit/ Leaves/ Flowers litter:** No

**Surface Rooting:** No

**Life Span:** 25-50 years

**Diseases:** Powdery Mildew, Blights

**Edible Parts:** Fruit

**Pests:** Scales, Aphids

**Plant Propagations:** Cutting

---



## MORE IMAGES



Other Image