

Hedera helix

(English ivy)

Evergreen climbing vine by aerial rootlets. Adult part of the plant change the leaf shape and grow more like shrub-like plant. Flowers are in a creamy cluster, it has bluish drupes. The plant can tolerate shade therefore could be used as perfect groundcover. This often aggressive vine may become invasive. It can be detrimental to trees and can cause premature decline or death if allowed to grow up and overtake them. It is also used for green walls and facades plus in hanging container plants.



Plant Image

Landscape Information

French Name: Lierre commun

Pronunciation: HED-dur-uh HEL-licks

Plant Type: Vine

Origin: Europe, western Asia and north Africa

Heat Zones: 6, 7, 8, 9, 10, 11, 12

Hardiness Zones: 4, 5, 6, 7, 8, 9, 10

Uses: Wildlife, Facade, Ground cover, Trellis, Green Wall

Size/Shape

Growth Rate: Fast

Tree Shape: oval

Canopy Symmetry: Irregular

Canopy Density: Medium

Canopy Texture: Medium

Height at Maturity: 8 to 15 m

Spread at Maturity: 1.5 to 3 meters

Time to Ultimate Height: 5 to 10 Years

Hedera helix

(English ivy)



Flower Image

Botanical Description

Foliage

Leaf Arrangement: Alternate

Leaf Venation: Palmate

Leaf Persistence: Evergreen

Leaf Type: Simple

Leaf Blade: 5 - 10 cm

Leaf Shape: Rhomboid

Leaf Margins: Entire

Leaf Textures: Leathery

Leaf Scent: No Fragrance

Color(growing season): Green, Variegated

Color(changing season): Green

Flower

Flower Showiness: False

Flower Size Range: 1.5 - 3

Flower Type: Umbel

Flower Sexuality: Diecious (Monosexual)

Flower Scent: No Fragrance

Flower Color: Green

Seasons: Spring

Trunk

Trunk Susceptibility to Breakage: Generally resists breakage

Number of Trunks: Single Trunk

Trunk Esthetic Values: Not Showy

Fruit

Fruit Type: Berry

Fruit Showiness: False

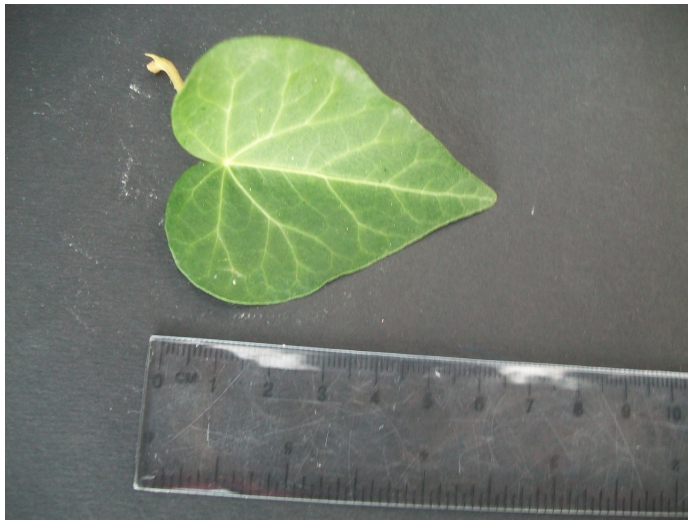
Fruit Size Range: 1.5 - 3

Fruit Colors: Blue

Seasons: Spring

Hedera helix

(English ivy)



Leaf Image

Horticulture Management

Tolerance

Frost Tolerant: Yes

Heat Tolerant: No

Drought Tolerant: Yes

Salt Tolerance: Moderate

Requirements

Soil Requirements: Clay, Loam, Sand

Soil Ph Requirements: Acidic, Neutral, Alkaline

Water Requirements: Moderate

Light Requirements: Full, Part, Shade

Management

Toxity: Yes

Invasive Potential: Yes

Susceptibility to Pests and Diseases: Yes

Pruning Requirement: Little needed, to develop a strong structure

Fruit/ Leaves/ Flowers litter: No

Surface Rooting: No

Life Span: Less than 25

Edible Parts: None

Pests: Aphids

Plant Propagations: Seed, Cutting

MORE IMAGES



Fruit Image



Bark Image



Other Image