

Acer palmatum 'Garnet'

(Japanese maple 'Garnet', Dissected Japanese Maple)

Japanese maple is a middle size, low branching deciduous tree with outstanding leaf color in fall. The leaves are deeply lobbed with many attractive colors such as yellow, orange, red, purple. In mid spring small clusters of flowers appear followed by large winged fruit. Japanese maple is excellent in any garden with any size even as a patio plant in pots.

The cultivar 'Garnet' features lacy, deeply lobed, palmate (hand-shaped) leaves which are deep wine-red from spring through summer and turn fiery red tones in fall.

<ul>  
</ul>



Plant Image

Landscape Information

<b>French Name:</b> érable japonais
<b>Arabic Name:</b> قيقب ياباني
<b>Pronunciation:</b> AY-ser pal-MAY-tum
<b>Plant Type:</b> Tree
<b>Origin:</b> Japan, Korea
<b>Heat Zones:</b> 2, 3, 4, 5, 6, 7, 8
<b>Hardiness Zones:</b> 6, 7, 8
<b>Uses:</b> Topiary, Bonsai, Specimen, Container
<b>Size/Shape</b>
<b>Growth Rate:</b> Slow
<b>Tree Shape:</b> Vase
<b>Canopy Symmetry:</b> Irregular
<b>Canopy Density:</b> Medium
<b>Canopy Texture:</b> Fine
<b>Height at Maturity:</b> 5 to 8 m
<b>Spread at Maturity:</b> 5 to 8 meters
<b>Time to Ultimate Height:</b> 10 to 20 Years

## Acer palmatum 'Garnet'

(Japanese maple 'Garnet', Dissected Japanese Maple)



Flower Image

---

### Botanical Description

#### Foliage

**Leaf Arrangement:** Opposite

**Leaf Venation:** Palmate

**Leaf Persistence:** Deciduous

**Leaf Type:** Simple

**Leaf Blade:** 5 - 10 cm

**Leaf Shape:** Star

**Leaf Margins:** Serrate

**Leaf Textures:** Fine

**Leaf Scent:** No Fragrance

**Color(growing season):** Green

**Color(changing season):** Yellow, Orange, Red, Copper

---

#### Flower

**Flower Showiness:** False

**Flower Size Range:** 0 - 1.5

**Flower Type:** Raceme

**Flower Sexuality:** Monoecious (Bisexual)

**Flower Scent:** No Fragrance

**Flower Color:** Red

**Seasons:** Spring

---

#### Trunk

**Trunk Susceptibility to Breakage:** Generally resists breakage

**Trunk Esthetic Values:** Smooth

---

#### Fruit

**Fruit Type:** Samara

**Fruit Showiness:** True

**Fruit Size Range:** 3 - 7

**Seasons:** Spring

---

## Acer palmatum 'Garnet'

(Japanese maple 'Garnet', Dissected Japanese Maple)



Leaf Image

---

### Horticulture Management

#### Tolerance

**Frost Tolerant:** Yes

**Heat Tolerant:** No

**Drought Tolerant:** No

**Salt Tolerance:** Moderate

---

#### Requirements

**Soil Requirements:** Clay, Loam, Sand

**Soil Ph Requirements:** Acidic, Neutral

**Water Requirements:** Moderate

**Light Requirements:** Part, Shade

---

#### Management

**Toxity:** No

**Invasive Potential:** No

**Susceptibility to Pests and Diseases:** No

**Pruning Requirement:** Little needed, to develop a strong structure

**Fruit/ Leaves/ Flowers litter:** Yes

**Edible Parts:** None

**Pests:** Scales, Aphids

**Plant Propagations:** Seed, Cutting, Grafting

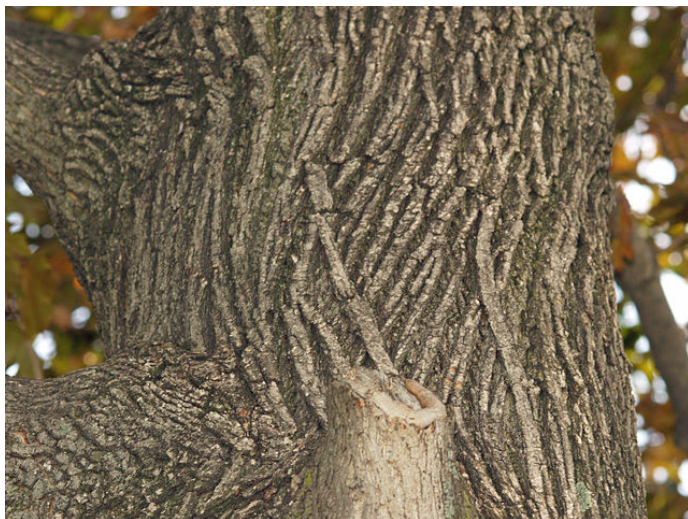
---



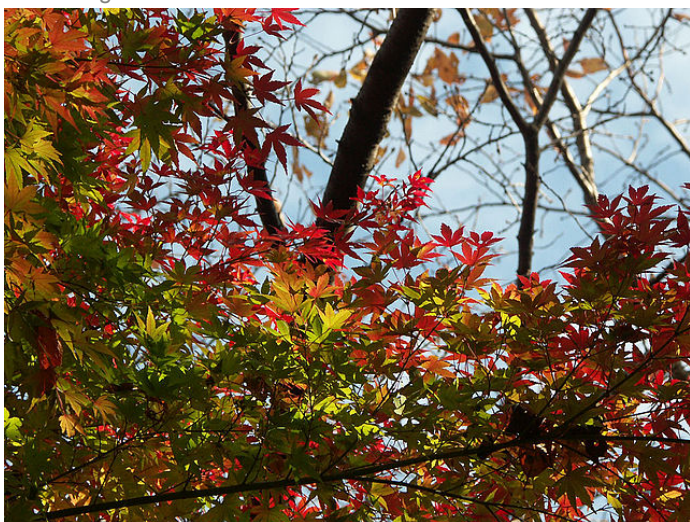
## MORE IMAGES



Fruit Image



Bark Image



Other Image