

Callistemon rigidus

(Erect Bottlebrush, Stiff Bottlebrush)

Callistemon rigidus is a stiff upright shrub native to Australia. It reaches 2-2.5 m in height and 2.5-3 m in weight at maturity. It , is characterized by red flower spikes that are shaped like bottle brushes. The flower spikes t appear in the spring and summer. The persistent fruits are hard seed capsules grow around the stem. The narrow leaves of this shrub are sharply pointed and fragrant when crushed.. The stems continues to grow after the flowers and seed capsules, so they are not necessarily at the terminal. So there will be foliage, flower or seed capsules and then foliage again. Bottlebrush can be trained to grow into a small, multi-trunk tree. The plant can function as a nice specimen, patio, and container plant. It attacks butterflies and hummingbirds. Bottlebrush requires a full sun position in the landscape and well-drained soils. It is heat and drought tolerant but will not tolerate overwatering. It has a serious stem disease causing a witches broom.



Plant Image

Landscape Information

Pronunciation: kal-liss-STEE-mun RIDGE-jid-us
Plant Type: Shrub
Origin: Australia
Heat Zones: 6, 7, 8, 9, 10, 11
Hardiness Zones: 8, 9, 10, 11, 12, 13
Uses: Hedge, Specimen, Wildlife, Reclamation
Size/Shape
Growth Rate: Moderate
Tree Shape: Spreading
Canopy Symmetry: Symmetrical
Canopy Density: Medium
Canopy Texture: Fine
Height at Maturity: 1.5 to 3 m
Spread at Maturity: 1.5 to 3 meters
Time to Ultimate Height: 2 to 5 Years

Callistemon rigidus

(Erect Bottlebrush, Stiff Bottlebrush)



Leaf Image

Botanical Description

Foliage

Leaf Arrangement: Alternate

Leaf Venation: Pinnate

Leaf Persistence: Evergreen

Leaf Type: Simple

Leaf Blade: Less than 5

Leaf Shape: Linear

Leaf Margins: Ciliate

Leaf Textures: Smooth

Leaf Scent: Pleasant

Color(growing season): Green

Color(changing season): Green

Flower

Flower Showiness: True

Flower Size Range: 7 - 10

Flower Type: Spike

Flower Sexuality: Monoecious (Bisexual)

Flower Scent: No Fragrance

Flower Color: Red

Seasons: Spring, Summer

Trunk

Trunk Susceptibility to Breakage: Generally resists breakage

Number of Trunks: Multi-Trunked

Trunk Esthetic Values: Not Showy

Fruit

Fruit Type: Capsule

Fruit Showiness: True

Fruit Size Range: 0 - 1.5, 1.5 - 3

Fruit Colors: Brown

Seasons: Spring, Summer

Callistemon rigidus

(Erect Bottlebrush, Stiff Bottlebrush)



Fruit Image

Horticulture Management

Tolerance

Frost Tolerant: No

Drought Tolerant: No

Salt Tolerance: Moderate

Requirements

Soil Requirements: Loam, Sand

Soil Ph Requirements: Acidic, Neutral, Alkaline

Water Requirements: Moderate, Low

Light Requirements: Full

Management

Toxity: No

Invasive Potential: No

Susceptibility to Pests and Diseases: Yes

Pruning Requirement: Little needed, to develop a strong structure

Fruit/ Leaves/ Flowers litter: No

Surface Rooting: No

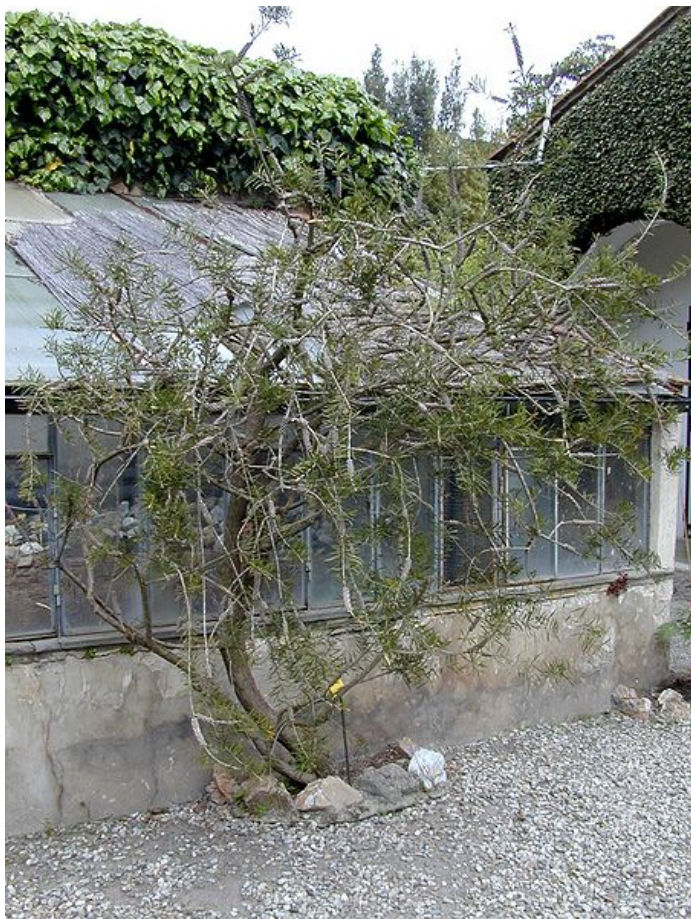
Life Span: 25-50 years

Edible Parts:

Pests: Mites

Plant Propagations:

MORE IMAGES



Other Image