

Euphorbia milli

(Crown of thorns)

This thorny plant is native from Madagascar. Evergreen stays green all all year long and from spring to late summer produces many flowers surrounded with two showy bracts. Bracts are modified leaves around the flowers helping plants invite insects for pollination. The plant is covered with thorn all over. Highly drought and salt tolerant can take full sun and poor soil. In colder area it is used as a house plant.



Plant Image

Landscape Information

French Name: Epine-du-Christ

Arabic Name: فربيون شوكة المسيح

Pronunciation: yoo-FOR-bee-uh MIL-ee-eye

Plant Type: Cactus / Succulent

Origin: Madagascar

Heat Zones: 1, 2, 3, 4, 5, 6, 7, 8, 9, 10, 11, 12, 13, 14, 15, 16

Hardiness Zones: 10, 11, 12, 13

Uses: Specimen, Border Plant, Mass Planting, Indoor, Container, Ground cover

Size/Shape

Growth Rate: Slow

Tree Shape: Round, oval

Height at Maturity: 1 to 1.5 m

Spread at Maturity: Less than 50 cm, 0.5 to 1 meter

Euphorbia milli

(Crown of thorns)



Flower Image

Botanical Description

Foliage

Leaf Arrangement: Spiral

Leaf Venation: Pinnate

Leaf Persistence: Evergreen

Leaf Type: Simple

Leaf Blade: Less than 5

Leaf Shape: Spatulate

Leaf Margins: Entire

Leaf Textures: Smooth

Leaf Scent: No Fragrance

Color(growing season): Green

Color(changing season): Green

Flower

Flower Showiness: True

Flower Size Range: 1.5 - 3

Flower Type: Cyme

Flower Sexuality: Monoecious (Bisexual)

Flower Scent: No Fragrance

Flower Color: Red, Purple, Pink

Seasons: Year Round

Trunk

Trunk Esthetic Values: Not Showy

Fruit

Fruit Type: Capsule

Fruit Showiness: False

Fruit Size Range: 0 - 1.5

Fruit Colors: Brown

Euphorbia milli

(Crown of thorns)



Leaf Image

Horticulture Management

Tolerance

Frost Tolerant: Yes

Heat Tolerant: Yes

Drought Tolerant: Yes

Salt Tolerance: Good

Requirements

Soil Requirements: Loam, Sand

Soil Ph Requirements: Acidic, Neutral

Water Requirements: Moderate

Light Requirements: Full

Management

Toxity: No

Invasive Potential: No

Pruning Requirement: No pruning at all

Fruit/ Leaves/ Flowers litter: No

Surface Rooting: No

Life Span: Less than 25

Edible Parts: None

Pests: Mealy-Bug

Plant Propagations: Cutting

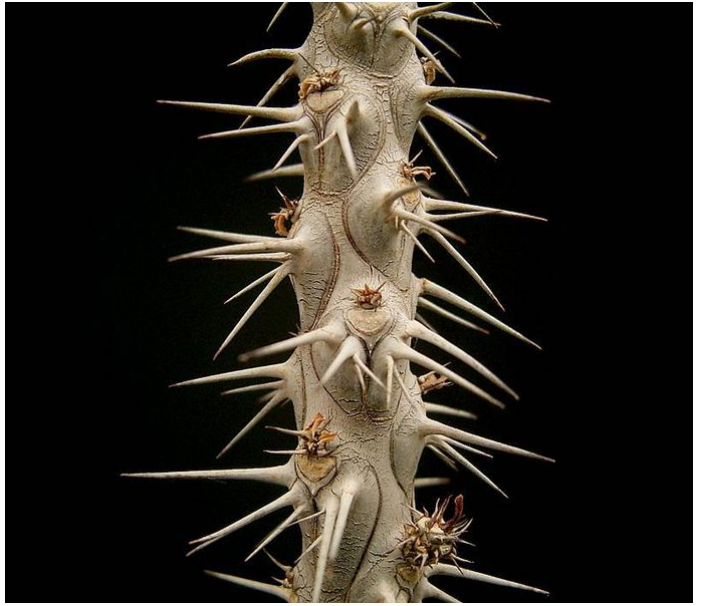
MORE IMAGES



Fruit Image



Other Image



Bark Image