

Mentha spicata

(Spearmint)

Mentha spicata is a perennial herb native to European , Mediterranean Areas. Its leafs are its edible part.

It survives in all kinds of soil with different pHs, as long as its exposed to partial to full sunlight. For it to grow properly it needs a moderate amount of water.

Moreover, it has a pleasant smell and small pink flowers.



Plant Image

Landscape Information

French Name: Vert Menthe

Arabic Name: النعناع الأخضر

Pronunciation: MEN-thuh spi-KAH-tuh

Plant Type: Groundcover

Origin: Europe, Mediterranean

Heat Zones: 1, 2, 3, 4, 5, 6, 7, 8, 9, 10, 11

Hardiness Zones: 3, 4, 5, 6, 7, 8, 9, 10, 11

Uses: Container, Edible, Medicinal

Size/Shape

Growth Rate: Fast

Tree Shape: Spreading

Height at Maturity: 0.5 to 1 m

Spread at Maturity: 0.5 to 1 meter

Time to Ultimate Height: 1 to 2 Years

Mentha spicata

(Spearmint)



Flower Image

Botanical Description

Foliage

Leaf Arrangement: Opposite

Leaf Venation: Pinnate

Leaf Persistence: Evergreen

Leaf Type: Simple

Leaf Blade: Less than 5

Leaf Shape: Oval

Leaf Margins: Serrate

Leaf Textures: Glossy, Medium

Leaf Scent: Pleasant

Color(growing season): Green

Color(changing season): Green

Flower

Flower Showiness: False

Flower Sexuality: Monoecious (Bisexual)

Flower Scent: Pleasant

Flower Color: Pink

Seasons: Spring, Summer

Fruit

Fruit Showiness: False

Seasons: Spring, Summer

Mentha spicata

(Spearmint)



Leaf Image

Horticulture Management

Tolerance

Frost Tolerant: Yes

Heat Tolerant: Yes

Drought Tolerant: No

Salt Tolerance: Poor

Requirements

Soil Requirements: Clay, Loam, Sand

Soil Ph Requirements: Acidic, Neutral, Alkaline

Water Requirements: Moderate

Light Requirements: Full, Part

Management

Toxity: No

Invasive Potential: No

Susceptibility to Pests and Diseases: No

Fruit/ Leaves/ Flowers litter: No

Surface Rooting: Yes

Life Span: Less than 25

Edible Parts: Leaf

Plant Propagations: Seed, Cutting, Division, Stolons

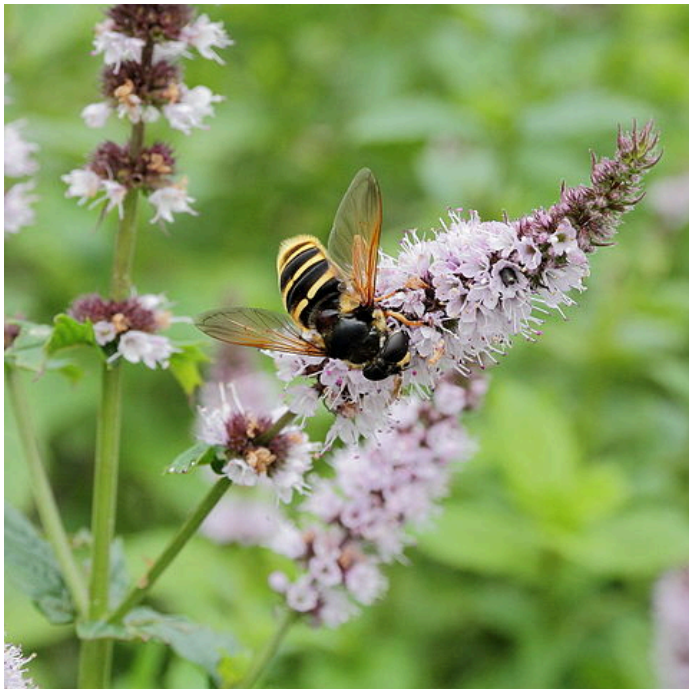
MORE IMAGES



Fruit Image



Bark Image



Other Image